



Halloween **ACTIVITY BOOK**



PACKED FULL OF MONSTER FUN!

NEWPORT LIVE
CASNEWYDD FYW

newportlive.co.uk





JOIN THE DOTS

Connect the numbered dots to spell out a Halloween message, and then colour it in.





ODD SKULL OUT

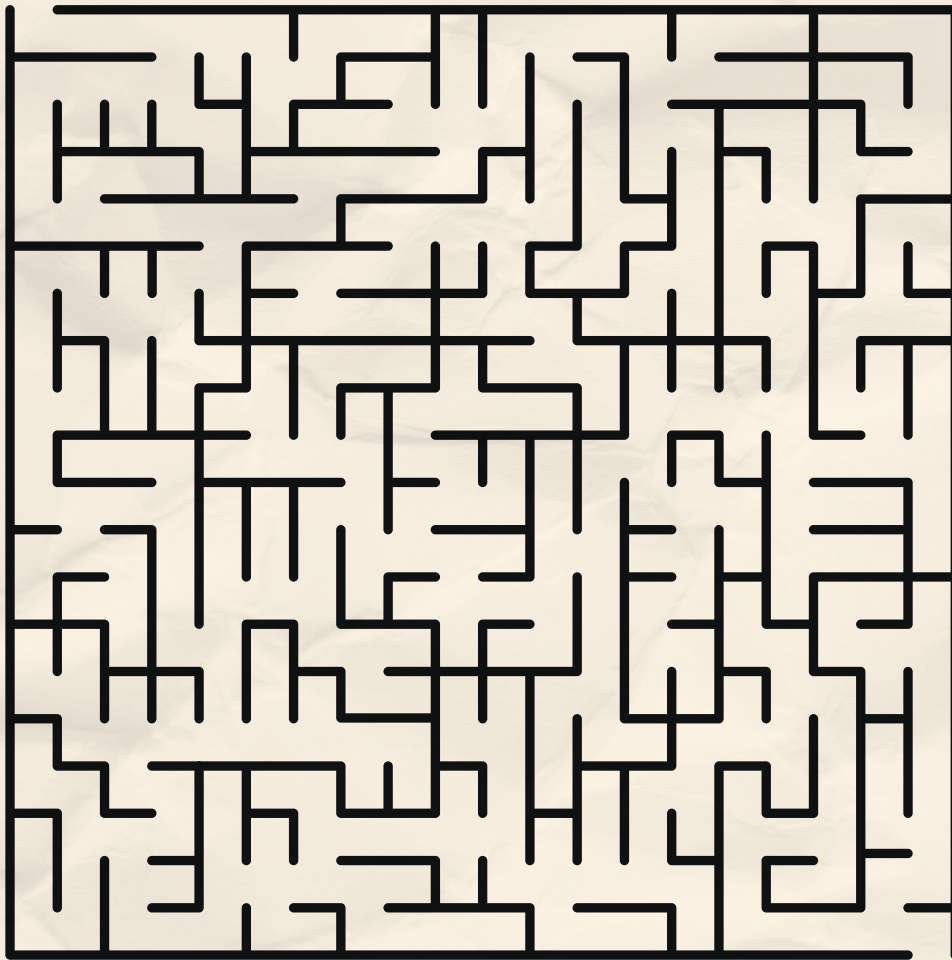
One of these skulls is different than the others.
Can you spot it?



Answer: Third row down, fourth skull across.

FIND WILLOW'S HAT

Poor Willow has lost her hat. Can you help her through the maze to get it back?





WORD SEARCH



Can you find all the words
in this fiendish puzzle?

V	R	Y	M	A	G	I	C	W	H
C	A	N	D	Y	F	C	Q	S	S
H	A	L	L	O	W	E	E	N	K
P	W	I	S	P	I	D	E	R	E
U	G	N	C	G	T	L	B	M	L
M	H	P	A	W	C	H	U	O	E
P	O	M	R	P	H	P	C	O	T
K	S	E	Y	O	U	B	A	N	O
I	T	L	L	R	G	A	T	T	N
N	Q	N	I	G	H	T	S	V	O

Bat
Candy
Cat
Ghost
Halloween

Magic
Moon
Night
Pumpkin
Scary

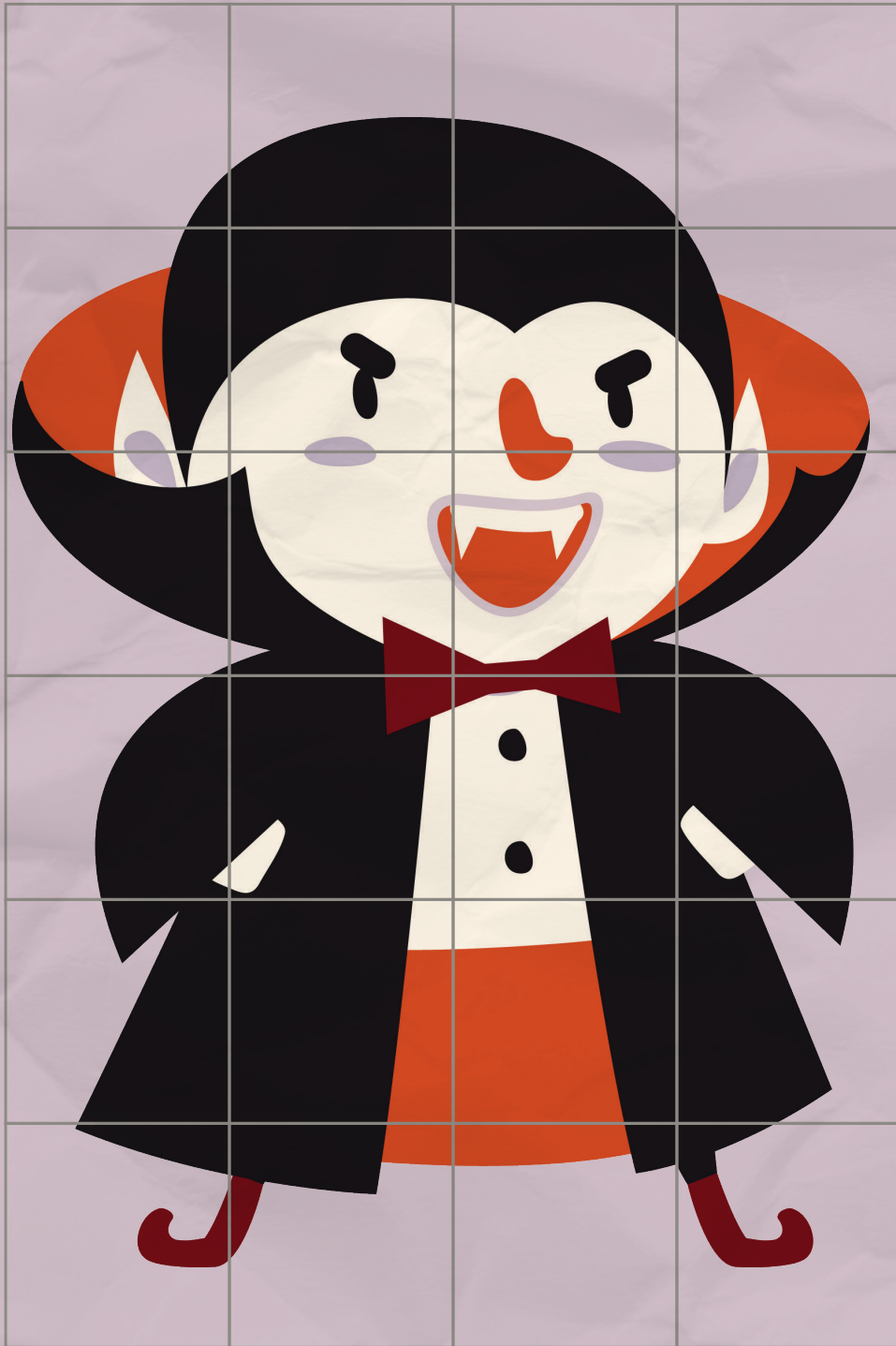
Skeleton
Spider
Witch

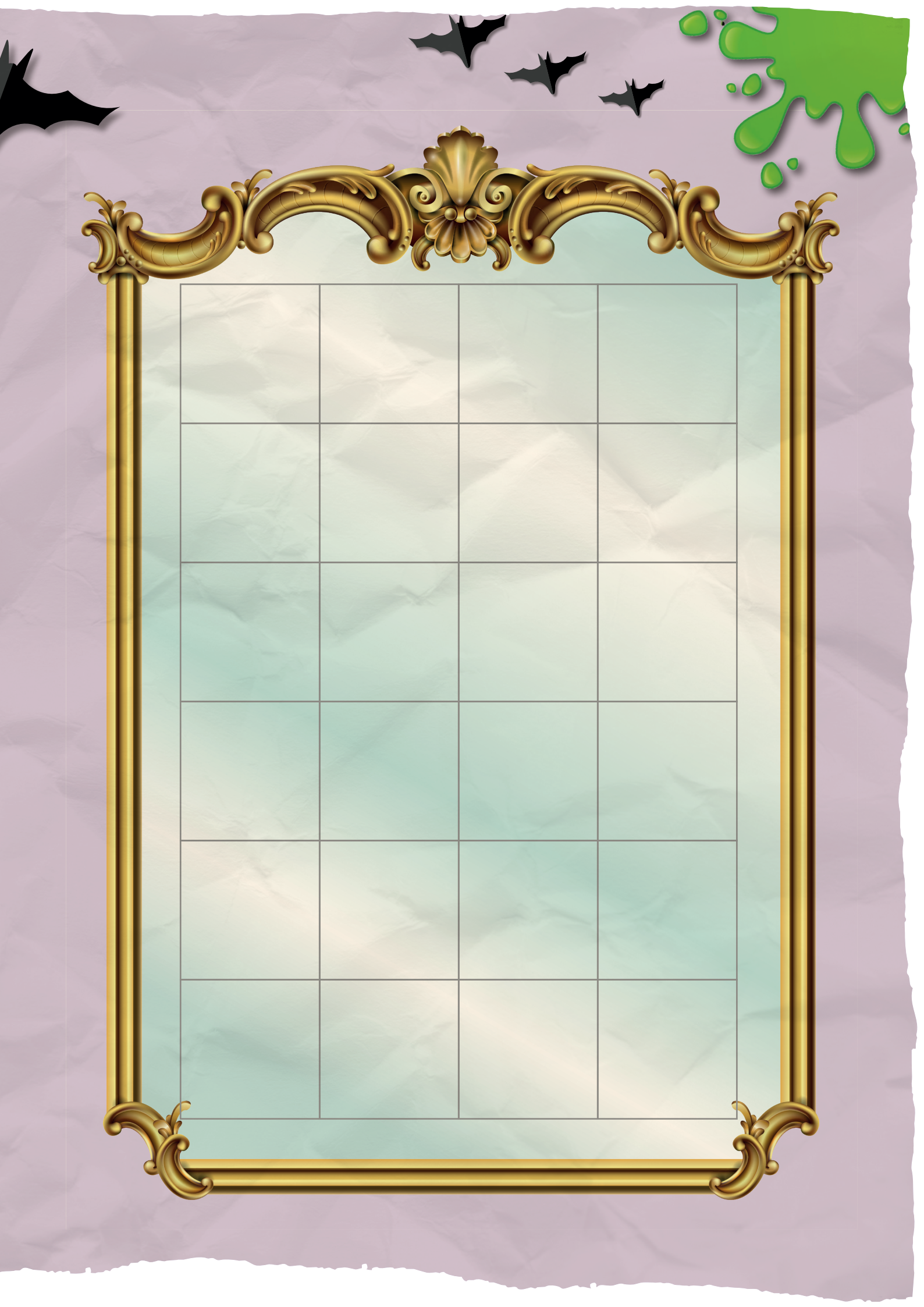


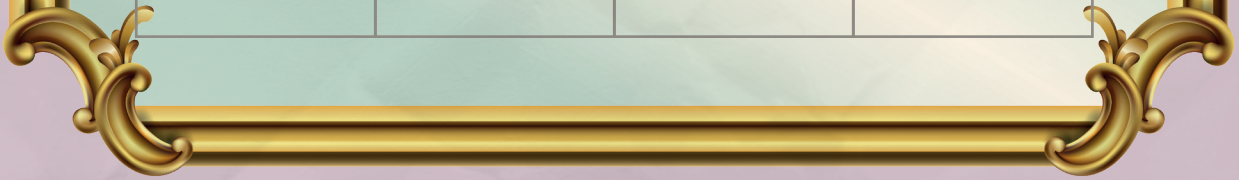


GRAF'S GOING OUT

Graf wants to check his outfit - but vampires have no reflection!
Use the grid to draw it for him.







CALavera COLOURING

Calavera skulls are a brightly-coloured symbol of Halloween in South America. How colourful can you make this one?



CLYDE'S HAUNTED HOUSE

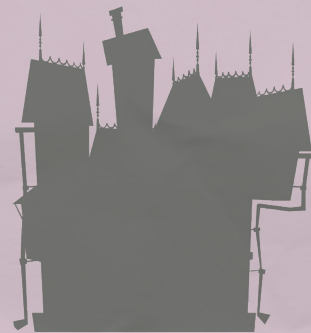
Clyde loves his home. Can you match the picture to the correct silhouette?



A



B



C



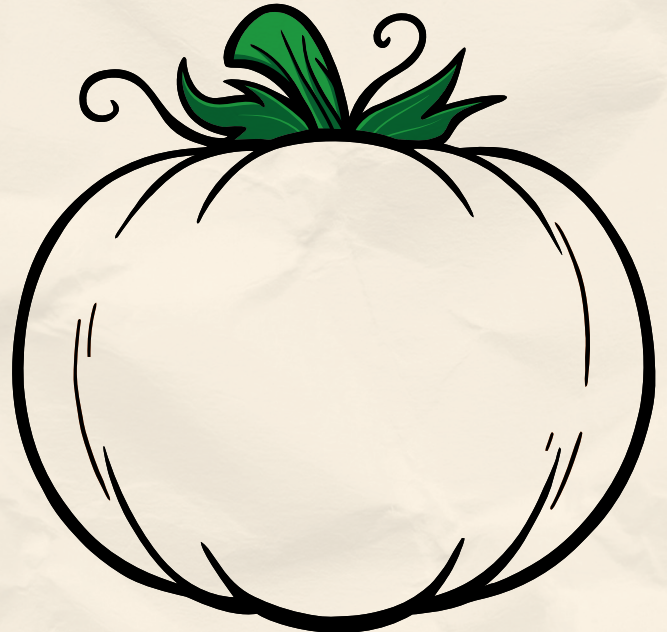
D



E

PUMPKINSPIRATION

**Can you draw 4 different scary faces on these pumpkins?
Colour them in when you're done.**



RICK'S PUMPKIN PATCH

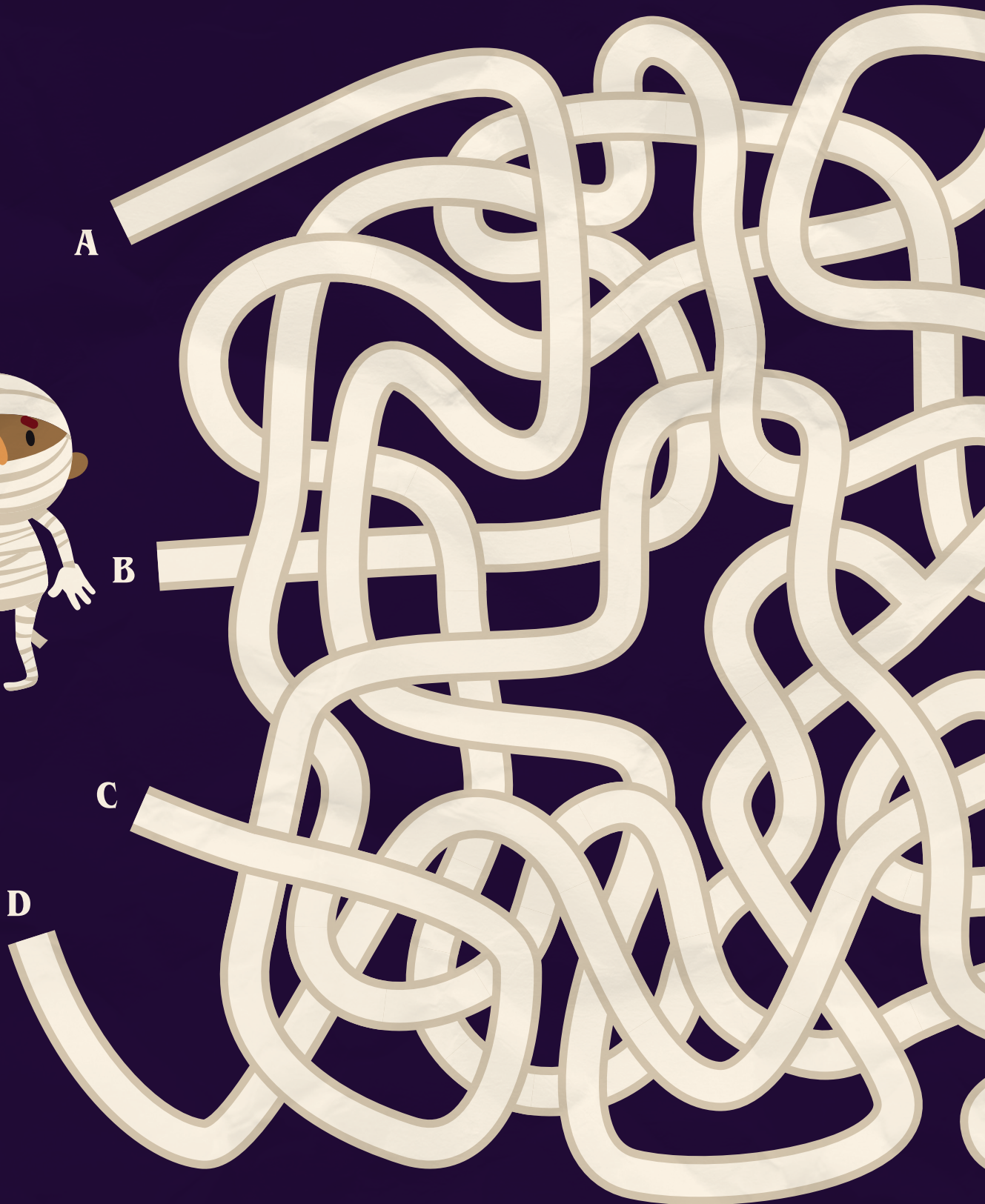
**Rick dropped his pumpkin and now it's mixed up with all the others.
Can you find the pumpkin from the photo?**

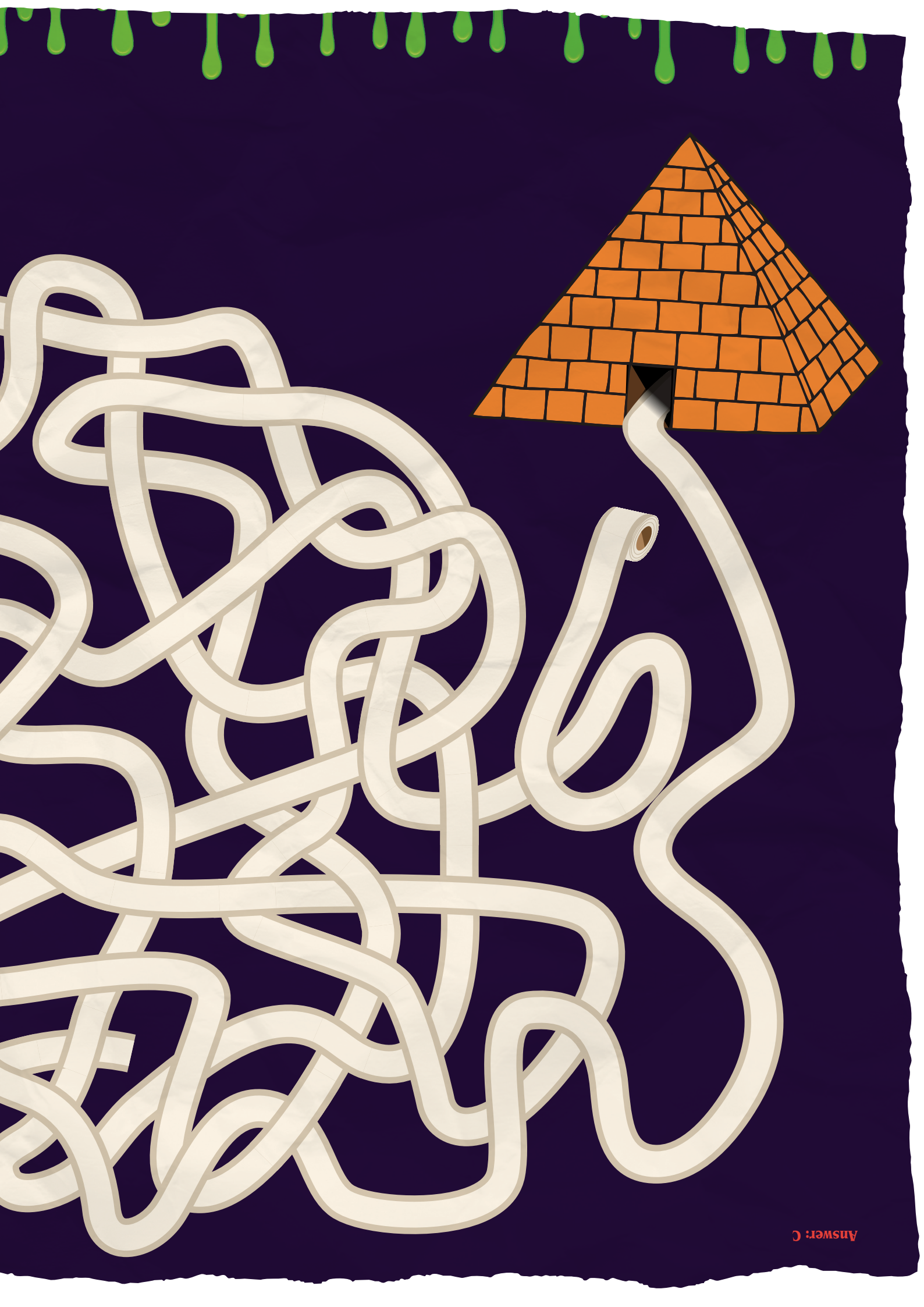


***CAN YOU ALSO FIND PUMPKINS THAT ARE:
UPSIDE-DOWN, BIGGER, SMALLER,
AND WEARING SUNGLASSES?***

CLEO'S BANDAGE TANGLE

Cleo snagged her bandage coming out the pyramid.
Help her untangle the mess by following the correct path back home.





Answer: C

SPOOK PRACTICE

Clyde is practising his scariest poses.
Can you match the poses into pairs - and spot the odd one out?



COLOUR THE KITTY





**Cut the masks out
and wear them!**

**NEWPORT LIVE
CASNEWYDD FYW**

